

# Goolwa Tourism 5214



[www.goolwatourism5214.com](http://www.goolwatourism5214.com)



Celebrating the History, Culture  
and Identity of Goolwa

**WELCOME**  
**AUTUMN/WINTER 2017**

**Welcome to our Autumn/Winter edition.  
A lot has happened since our last one.  
We now have a website which is gaining  
momentum - check it out.**

**We had a very successful Storm Boy  
exhibition - with it's opening weekend  
being held at Signal Point followed by  
an extended display at the sales office  
of the The Marina Hindmarsh Island.**



**Editor:- Karen Lume**

**Our new display focuses on the history  
of the names of the streets and lagoons  
of Hindmarsh Island.**

[goolwatourism5214@outlook.com](mailto:goolwatourism5214@outlook.com)

[www.goolwatourism5214.com](http://www.goolwatourism5214.com)

**As you can see by the theme of this book, we are shining the  
spotlight on some of the events, activities and people who have  
contributed to making Goolwa what it is today.**

**Bordered in yellow, read about some of our history as well as  
some current traditions, discover the background of some  
well-known identities and learn about some of the famous river  
cruisers built here.**

**We invite you to celebrate with us our history, our culture and  
our lifestyle...**



**We think this is the best place on earth to live and we hope you  
think it's the best place to visit because**

**There's more to Goolwa than meets the eye  
more than one visit, more than one day**



# THE BEST WAY TO EXPERIENCE THE COORONG IS BY KAYAK

**Ranked No1 By Tripadvisor  
For the Goolwa Region**

Experience the beauty of this unique waterways while gliding along at the perfect pace to take in all the Coorong has to offer.

Canoe the Coorong offers guided tours of the Coorong. Group bookings for schools, social groups, overnight expeditions and corporate days.



**Giftcards  
Available**



**Call Brenton on 0424 826 008**  
**[www.canoethethecoorong.com.au](http://www.canoethethecoorong.com.au)**





## RINGBALIN



A celebration of spirit and the Aborigines' connection with country, Ringbalin dances its way 2,300 kilometres across 3 states from the Darling River in Queensland as it joins the Murray River in New South Wales, flowing through Victoria and completing its journey in South Australia where the Murray River meets the Southern Ocean at the internationally recognised Coorong.



Groups of Aboriginal nations come together to dance the creation stories and sing the spirits back into the fragile rivers, the lifeblood of Australia.

Ringbalin promotes the position of elders, acknowledges the guidance of spirits and encourages young indigenous people to take part in cultural life and become aware of their significant connection to the lands and waters along the Murray-Darling river system.



# CALTEx



**36 Cadell St GOOLWA**

- ♦ Bait / Tackle - ♦ Bags of Ice
- ♦ BBQ Gas Bottle Swaps - ♦ Gas Bottle Refills
- ♦ Fuel Discounts
- ♦ Groceries
- Take-away*
- ♦ Pizza, Chicken, Yiro's, Schnitzels,
- ♦ Free Delivery

**ph: 8555 2889**

**7 DAYS ★ 6 a.m. – 10 p.m.**

ORDER OUR FULL RANGE ON-LINE  
[www.caltexgoolwa.com.au](http://www.caltexgoolwa.com.au)





# GOOLWA CAMPING

## TOURIST PARK

40 Kessell Road

ph: 8555 2144

email:- [bookings@goolwatouristpark.com.au](mailto:bookings@goolwatouristpark.com.au)

[www.goolwatouristpark.com.au](http://www.goolwatouristpark.com.au)

When you're on holiday, you shouldn't have to worry about a thing. Keeping this in mind, our grounds offer a wide assortment of features designed to streamline the camping experience.

We're located in close proximity to all sorts of scenic locales, and we make sure to provide the necessary amenities.

All you have to do is relax and have fun.



Offering Cabins and Villas, campground and 65 powered sites

Features include:-

enclosed camp kitchen with large deck area with bbq

2 swimming pools and second bbq area

basketball court, sand pit, jumping pillow and children's playground  
amenities block with disabled toilet and shower



## NAIDOC WEEK

NAIDOC week, which is celebrated annually in the first week of July, stands for National Aboriginal and Islanders Day of Observance Committee.



It is a week when Australia celebrates Aboriginal and Torres Strait Islander peoples, cultures and communities and recognises the valuable contributions that they make to our country.

The National NAIDOC Committee has announced the 2017 national theme - Our Languages Matter



The theme aims to celebrate the essential role that Indigenous languages play in both cultural identity, linking people to the lands and waters, and in the transition of history, spirituality and rites through story and song.





@90milewbs

**WHARF  
BARREL SHED**



**OPEN 7 DAYS**  
**LIVE MUSIC**  
**EVERY FRI+SUN**  
**HAPPY HOUR**  
**WEEKDAYS 3-6PM**  
**WINE TASTING**  
**FUNCTIONS**  
**MEMBERSHIPS**



**RIGHT NEXT TO**  
**OSCAR W.**  
**GOOLWA**  
**WHARF**

**08 8555 3181**

**WINE | BEER | COFFEE | FOOD | MUSIC**





# Southy's



**Wood Fired**  
**PIZZAS**

*& more!*

1 Cadell Street GOOLWA

🔥 **8555 5055** 🔥

*Phone Orders Available Now!*

## CAPTAIN KEITH VEENSTRA

11 September 1926 - 1989

### BOAT BUILDER



Kornelus (Keith) Veenstra – fondly known as “Skipper” – was born in Rotterdam, Holland. After learning the trade of carpentry and joinery and completing a draftsman’s course, he became involved in boat building and was a shipwright in the Royal Dutch Navy. He migrated to Australia in 1951 with his wife, Miep, and young son, Jock.

He first came to Goolwa in 1965. Keith likened the lower Murray waterways to the lakes and rivers where he sailed in Holland.

He started building and repairing boats and built a fleet of small hire boats and also a rail slipway at the Captain Sturt marina. In 1967 he built a timber day cruise motor vessel, the original *Aroona*, to carry passengers down to the Murray Mouth.

He went on to build and operate the three largest vessels to ever ply the River Murray system: The *Murray River Queen*, *Murray Explorer* and *Murray Princess*.



# Maartje (Miep) Veenstra

## 1927 - 2006



Maartje Hoogmoed was born in Rotterdam, Holland in August 1927. She married Kornelius (Keith) Veenstra in 1947 and they moved to Australia in 1950 with their son, Kees (Jock).

Miep and her family first lived in the migrant camps at Bathurst, New South Wales. She was bringing up Jock there while Keith went off to find work with the railways in South Australia. They moved to Blair Athol in Adelaide's North where their other sons, Richard and Chris, were born. The family then moved to Bordertown and Keith became a successful builder.

A fateful holiday to Goolwa in 1965 saw them buy the paddle steamer "Captain Sturt", including the associated boatyard and slipway. Keith built a fleet of hire boats and Miep had her own line of yabby pots where she would catch yabbies to sell to the tourists either fresh or pickled in jars. These were cooked in the old copper in the laundry on the "Captain Sturt".

The boatyard also provided moorings for vessels. Most of the boats were owned by people living in Adelaide and many of these owners became good friends.

In 1967 Keith and Miep embarked on the building of the first "Aroona", a day cruise vessel to take tourists to the Murray Mouth. This led to the building of "Leisure Island", a destination for barbeque trips, on Hindmarsh Island. The family would spend their days making satays and mixing salads in 12-gallon plastic rubbish bins!

The building of the passenger vessel "Murray River Queen" changed Miep's life as Keith was the Captain and she became Hostess, looking after passengers in the dining room and bar. Later as the company grew - with the building of more passenger vessels: "Murray Explorer" and "Murray Princess" - she also became involved in the purchase of merchandise, stores and souvenirs. She was known as "Mrs V" to staff and guests and remembered for her forthright manner and love of a good time.

(Interestingly Keith and Miep's three sons, Jock, Richard and Chris, and eldest grandson, Michael, all went on to become river skippers.)

After Keith's death in 1989 Miep lived on her beloved houseboat "Pecilan" (her grandson's spelling) and continued to be involved in life in the boatyard enjoying the company of her many boating friends.

A young wife and mother from Holland helped found a rich dynasty of riverboat activity in Australia which continues on to this day.



# CRUISE INTO THE SPECTACULAR COORONG NATIONAL PARK

## S P I R I T OF THE *Coorong* C R U I S E S



- 3.5 & 6 hour cruises
- Lunch & Afternoon Tea included



BOOK NOW **1800 44 22 03**



# HISTORY MONTH

May is History Month and just about everywhere you turn, you will find plaques and information boards depicting activities and events that helped in the formation of Goolwa's bustling river trade and boat building notoriety. Wander the streets and admire the architecture of the old buildings. Take the time to explore our town and learn about our history and heritage.



# Club Marina Holidays offers the perfect getaway.

Whether you'd like to try before you buy or you'd like some extra room for family and friends to be close by over the holidays, our 4 star fully self contained terraces are the perfect solution.

[tmhi.com.au/clubmarinaholidays](http://tmhi.com.au/clubmarinaholidays)



Ph 8555 7300 to book

## STAND UP PADDLE BOARD HIRE now available at TMHI!

[tmhi.com.au](http://tmhi.com.au)



TMHI now have 2 stand up paddle boards available to hire, in addition to our single and double kayaks.

Paddle around the protected marina waterways and observe all the natural beauty we have right here on our doorstep.

Call us on 8555 7300 to book your next adventure.

\* terms and conditions apply.



## FRANK AND DORA TUCKWELL



Frank and Dora Tuckwell were born in Goolwa and come from a family of seven children.

In 1969 Frank became a charter member of the South Coast Lions Club and in 1979 he helped form and was a charter member of the Lions Club of Goolwa Inc. He has held most positions in these Lions Clubs and worked very hard on most of their Projects. One, the Bicentenary River Relay involved nearly every Lions Club along the Murray River System and 150,000 school children. Frank was awarded the President's Star Award and in 2006-2007 he was awarded the Lions Melvin Jones Fellowship Award, which is one of the top Lions Awards internationally.

Frank was in National Service and joined the R.S.L. He has done a lot for the R.S.L. including writing a book and donating the proceeds back to them. He has written a book for the "Oscar W" with the proceeds going back to the "Oscar W". He has been involved for years with the Murray/Darling Basin authority and he records every venture that arrives at the Murray Mouth.

With 20 years as a Councillor Frank has been on numerous Committees and sporting bodies including the Oval Committee.

Dora Tuckwell was a Goolwa Librarian for 32 years, and has seen many changes in the town. She was a founding member of the Goolwa Branch of the National Trust and was awarded Citizen of the Year in 1989.

She was a member of the South Coast Choral and Arts Society and a correspondent for the Strathalbyn Paper "The Southern Argus" for many years. Dora was a member of the Town Hall Committee and a volunteer for the Signal Point Support Group and a Goolwa Tourist Office Volunteer. Like her brother Frank she has done a lot for this town, and its history, for which we must all be most grateful.



- \* Boat service, repairs and anti-fouling
- \* Travelift to 60 tonnes
- \* Slipway to suit houseboats,
- \* Honda outboards, 7 year warranty
- \* Office open 7 days
- \* Club Marine Insurance
- \* Chandlery and café
- \* Variety of berths and dry storage
- \* Water side fuel dock and boat sales
- \* Holiday accommodation and much, much more.



**Open 7 days to 5pm  
phone us on 8555 7300  
to discuss your boating needs.**

**[tmhi.com.au](http://tmhi.com.au)**





# GOOLWA MOTOR MUSEUM

The Museum is right in the heart of the beautiful River Port town of Goolwa.

Classic vehicles from all over the world.

Some unique one of a kind. 45 interesting cars on display, from 1920's to 1970's.



OPEN: Wednesdays to Saturdays  
10a.m. to 4.30 p.m.

Sunday by appointment for clubs  
or large groups

**45 Gardiner Street, Goolwa S.A. 5214**

**PHONE: (08) 8555 3338**

# Cruise the Coorong



- \* Day trip along the Coorong
- \* Refreshments provided
- \* Bookings essential

email: [info@cruisethecoorong.com.au](mailto:info@cruisethecoorong.com.au)

**0410 488 779**





## CAPTAIN JAMES RITCHIE

1832 – 23 April 1881

### RIVER BOAT CAPTAIN



James Ritchie was born in Cockenzie Scotland. At the age of 21, James and his brother John together with Scottish neighbours George and Thomas Johnston, William Barber and John Barclay joined the crew of the small steamer *Lioness* for a voyage to Australia. Captain Francis Cadell used the *Lioness* for towing purposes in Port Melbourne. After an unsuccessful stint in the goldfields Barber, Barclay and Ritchie joined Capt. Cadell's *River Murray Navigation Company*.

James returned briefly to Scotland to marry Alison Johnston before travelling to Australia on the *Lady Emma* in 1854. Alison arrived in Melbourne in 1858 before moving to Port Willunga where James was working. In 1861 they moved to Goolwa. James took the screw steamer *Wakool* to New Zealand for Cadell. In 1868 James contributed £10 for land and extensions to the Wesleyan Methodist Chapel, Bingham St, Goolwa. He then worked in Echuca for 12 years where he died after a long illness. His wife and family moved back to Goolwa where four of James' sons also became captains of river boats. Third son George was Mayor of Goolwa 3 times and enjoyed a state parliamentary career of over 42 years, including acting Premier and Treasurer for SA in 1935. The cottage on 6 Brooking St, now known as *Capt Ritchie's Cottage* (with the cannon on the roof) was named *Pt Sefton* after a town near Cockenzie

# ARTWORX

## GALLERY & GIFTS



Part of the Fleurieu Art Trail, Artworx features beautiful hand blown glass, pottery and jewellery, sourced by gallery owner Liz and John Francis from around Australia as well as imported pieces from Africa, Mexico, Morocco, South America, India and Indonesia.



### Artworx Gallery & Gifts

12 Hays Street, Goolwa South Australia 5214

Phone: (08) 8555 0949 Mobile: 0418 815 375

Email: [admin@artworxgallery.com.au](mailto:admin@artworxgallery.com.au)

Website: [www.artworxgallery.com.au](http://www.artworxgallery.com.au)

Gallery Hours:

Wednesday-Monday & Public Holidays 10.00am-4.30pm





## HINDMARSH ISLAND

Hindmarsh Island is Australia's only river-bound island with sea water on one side and fresh water on the other.

The first European to set foot on Hindmarsh Island was Captain Charles Sturt in 1830. Sturt used the island as a viewing point, and from there he sighted the Murray Mouth.

The following year Captain Collet Barker surveyed the Murray Mouth but was killed by Indigenous Australians after swimming across the mouth.

Hindmarsh Island Monument, on the corner of Randell and Monument Roads, was erected in 1930 and is dedicated to Sturt and Barker.

The island was named by Captain John William Dundas Blenkinsop in 1837 after South Australia's first Governor, Sir John Hindmarsh.



# BOMBORA@Goolwa beach

*Cafe with a stunning view of the fantastic Fleurieu coastline*

Open: Friday, Saturday, Sunday, Monday  
8 a.m. -- 5 p.m.

## BEACH ROAD GOOLWA

## PHONE: 8555 5396

# ART



[www.artatgoolwa.com](http://www.artatgoolwa.com)

Exhibiting award winning artists across a range of mediums paintings, glass, photography, ceramics, mosaics, textiles, wood and metal work jewellery and more.



**ART@**  
**GOOLWA** INC.

*A gallery full of surprises*

**13 Porter Street, Goolwa**

**Next door to the Museum**

**Open Mon, Wed-Sun**

**11am - 4pm**

**Phone 8555 0095**

# GALLERY



# Waterfront living at its best.

Waterfront land from \$178,500\*



These parcels of land called 'Platinum Waters' are the last north facing waterfront land to be offered within The Marina Hindmarsh Island. Just over the bridge from Goolwa and located on Blanche Parade, these allotments offer a fabulous northerly aspect all year round.

Perfect for entertaining and a lifestyle on the waters edge, the allotments range from 756m<sup>2</sup> to 1205m<sup>2</sup>. At \$178,500 you're not just buying a waterfront block of land, you're buying much, much more.

Phone **08 8555 7300** or **0407 624 119**, visit our Sales & Information Centre open 7 days 10am—5pm or visit [tmhi.com.au](http://tmhi.com.au)

**Much, much more than a Marina**



\*Average pricing as of 1/3/16 \$212528.57 RLA 178898

## AUSTRALIA'S FIRST PASSENGER RAILWAY

The first railway venture was the line between Goolwa and Port Elliot which was opened in 1854.



The carriage is on display, encased in glass, at the top of Cadell St.





# EASTER

The essence of the Christian faith is the life and teachings of Jesus Christ. Easter is about mourning His death and celebrating His resurrection.

The religious among us flock to churches to join in the ceremonies and take time for personal reflection.

Whether over an elaborate feast or a simple picnic, with or without prayer, families and friends gather to share and celebrate life, love and companionship.



## Goolwa Community Arts & Crafts Group Inc.



### Opening Hours

11 a.m. to 3.00 p.m. Monday to Saturday

10 a.m. to 4.00 p.m. Sundays,

School & Public Holidays.

Closed Mondays April to end September  
& Christmas Day.

**Phone: (08) 8555 5600**

**Enquiries (08) 8552 2679**



Locally made  
arts and crafts  
with a selection  
of jams, pickles  
and biscuits.



**Situated in Dunbar Road,  
Goolwa on the Steam Ranger  
Railway Platform**



85 Airport Road  
ph: 0451 502 858  
[www.goolwaanimalfarm.com.au](http://www.goolwaanimalfarm.com.au)



Come and enjoy wandering round the grounds. See what wildlife you can see.  
From small animals such as rabbits and hens in the barn,  
to alpacas and goats in the paddock.

You can feed them with their special food and bottle feed any babies we have when you visit.  
The kids will also love a ride on one of our beautiful ponies.

Come and meet our alpacas, spot the baby kangaroos peeping from Mum's pouch  
and see our Emus. If you're lucky you may see our fruit gliders too.

Maybe have a go on our free trailer ride.

Let the kids play on the playground or, if they are very small, in our special baby play area.  
Enjoy great coffee, cold drinks and snacks in our cafe- you'll probably want to stay a while!



**Open Saturday and Sunday and public holidays 10am - 4pm**

**Also open every day of school holidays 10am - 4pm  
except 24, 25 & 26th December and in severe heat/weather conditions  
call us or check Facebook for up to date information**

**ADULTS \$10.00---CHILDREN (2-17 Years) \$8.00---SENIORS \$8.00**

**(Times and prices correct at time of printing but may change without notice)**



## **REV. ALAN AND HELEN JONES**



Alan Jones has served many communities in South Australia and New South Wales over the 50 years that he had been a Methodist then Uniting Church Minister. He spent 13 of those years at Port Elliot. The highlight of his community service was the 19 years he and his wife Helen had been involved with the Goolwa KESAB Tidy Towns Group that gained one National Tidy Towns Award and Hall of Fame entry, many state awards plus personal recognition. He was a Councillor with the Goolwa and Port Elliot Council. He has been involved with many Committees and Councils covering a wide range of topics including computing, basketball, Inter-Church Councils, Currency Creek Cemetery, kindergartens, hospitals and the Goolwa Community Bank. He has been an active member of Rotary and Goolwa RSL. He is a Paul Harris Fellow, has a National Service Medal (medic in RAF Fighter Command) and was named 2010 Australia Day Citizen of the Year in Alexandrina. He and Helen have hosted many international and interstate visitors to their B&B in Goolwa.

Now deceased, Helen's vocation as a triple certificated nurse, specialising in midwifery gave her a great background for the work she did in Rotary programs for mental health. This included organising two forums plus weekly discussion groups at the Centre for Positive Ageing. She was on the Rotary District Committee for Mental Health.

# GOOLWA HOTEL



*Come enjoy the friendly hospitality of the Goolwa Hotel*

## **GREAT BEER, GREAT FOOD, GREAT SERVICE**

- ☀ WEEKLY THIRSTY CAMEL SPECIALS
- ☀ Monday-Saturday \$10.00 Lunch Specials
- ☀ Tuesday Night-Fish Night \$12.00
- ☀ Thursday/Friday Nights-Schnitzel Nights \$12.00
- ☀ Sunday-2 Course Roast Day \$15.00

## **EXCLUDES PUBLIC HOLIDAYS/LONG WEEKENDS**

Normal Menu Available

BOOKINGS ADVISABLE OVER DEC/JAN

**For Bookings Phone: 8555 2012**

OPEN 7 DAYS EXCLUDING CHRISTMAS DAY & GOOD FRIDAY



# ANZAC DAY

25th  
April

*~ Lest we forget ~*

Although it stands for Australian and New Zealand Army Corps, ANZAC Day is a dedication to the men and women of all defence forces, past and present, who risk their lives to protect our freedom.

Dawn Services are held at RSL Clubs and Soldiers' Memorials around the country where the masses gather to remember those who paid the ultimate price for us.



Goolwa RSL Club, Cutting Street



MOTEL GOOLWA  
FLEURIEU PENINSULA

## **Spacious Rooms**

Queen, Twin, Family & Spa Rooms  
Free Wi-Fi & Swimming Pool

**30 CADELL STREET, GOOLWA SA 5214**

**PH: 08 8555 1155**

[info@motelgoolwa.com.au](mailto:info@motelgoolwa.com.au)

[www.motelgoolwa.com.au](http://www.motelgoolwa.com.au)





## **PADDLESTEAMER OSCAR W and the barge DART**

**She had a busy working life carrying wool and other cargo along the lower Murray River, and was used as a general work horse during the building and maintenance of the barrages.**



**The Oscar W is moored at the wharf next to the Riverboat Centre. She is maintained and run by a dedicated army of volunteers. They keep her running by staffing the ticket office and crewing the boat for her regular cruises.**



**The Barge Dart rests ashore under the Hindmarsh Island bridge awaiting restoration.**



# GOOLWA NATIONAL TRUST MUSEUM

Built around 1872 as a Blacksmith's shop, the museum displays the history of Goolwa, Currency Creek and Hindmarsh Island.



A series of permanent and changing exhibitions telling the stories and interpreting the buildings of Goolwa, Hindmarsh Island and Currency Creek from pre-European settlement to the present day.

It also contains the shipping collection of well-known maritime historian, Ronald Parsons. One of the most unusual items in the collection is Pop (Gerhard) Kaesler's @Home from Home@ vehicle which he constructed in 1929 from an old Dodge tourer and is generally accepted as one of the first, if not **the** first, motorhome in Australia.







# P.S. Federal

GOOLWA - Built in 1902

**You'll have complete privacy  
with fully self contained  
accommodation and BnB**

**0429 968 962  
Eco Friendly**

The PS Federal is the perfect place for a tranquil, secluded getaway. Built in 1902 at Morgan, it has had a varied life as a working paddle steamer, a mission boat and private holiday home. It now rests permanently in the reeds adjacent to a bird sanctuary and opposite Hindmarsh Island, with great views of Goolwa and Hindmarsh Island from its large picture windows and upper and lower decks.

With two upstairs bedrooms, self contained kitchen (breakfast supplied first morning) and a large lounge with gas heating, it provides comfortable accommodation decorated in a blue and white nautical theme. It's ideally located for sailing, windsurfing and skiing and yet is within walking distance of the beach, cafes and the township of Goolwa.



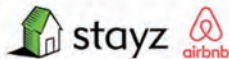
## **Enquiries & Reservations**

Dan and Beth Males

Postal Address: RSD 38, Tooperang S.A. 5255

**0429 968 962 0427 017 741**

saxonsuri@bordnet.com.au [www.psfederal.com](http://www.psfederal.com)





## Doll museum, doll shop and lolly shop

Award-winning display of dolls and toys  
Large range of sweets and lollies



Open 7 days (except Christmas Day)

10am - 5pm

email: [sales@riverdolls.com.au](mailto:sales@riverdolls.com.au)





# Rose Eden House, Goolwa



## INDULGE YOURSELF

### The ultimate in Bed & Breakfast Accommodation

*We invite you to experience the most luxurious retreat the Fleurieu has to offer. Only 1 hour drive south of Adelaide you will discover the picturesque seaside town of Goolwa. Rose Eden House positioned perfectly in the heart of town for your convenience.*



CONTACT DETAILS: Ian and Terry Cross  
Mobile: 0448 752 012  
E: [bookings@roseedenhouse.com.au](mailto:bookings@roseedenhouse.com.au)  
[www.roseedenhouse.com.au](http://www.roseedenhouse.com.au)

*To spoil yourself now  
for that special  
occasion or getaway.....*



# MURRAY RIVER QUEEN

Murray River Queen was the first modern cruise boat to enter service on the Murray River. The vessel was the inspiration of Keith Veenstra, a Dutch shipwright who emigrated to Australia in the 1951 with his family, and established a boatbuilding yard at Goolwa in 1964. Keith Veenstra excavated a building berth at Narnu Bay on Hindmarsh Island, opposite Goolwa, and on 1 December 1972 work began on the new vessel.



Measuring 879 gross tons, Murray River Queen was 160 ft/48.7 metres long with a beam of 39 ft/11.9 metres, and powered by a pair of Scania diesels giving a service speed of 8 knots. There were four passenger decks containing 44 cabins, all with two berths and private facilities. The top deckhouse contained the bridge and officers's cabins, and an open deck area. The main public rooms included a large lounge/dining room with a bar and seating right forward overlooking the bow. The entire accommodation block was fully air-conditioned.





# Goolwa Wharf Market



**Stock up on**  
Local fresh produce,  
Homemade jams & pickles  
Hand crafted goods  
Unique jewellery  
Buy local grown plants  
Have a coffee,  
Eat locally made food,  
Buy a gift,  
or just meet up with  
friends.....



**Jaralde Park  
Goolwa Wharf  
Cutting Road, Goolwa**

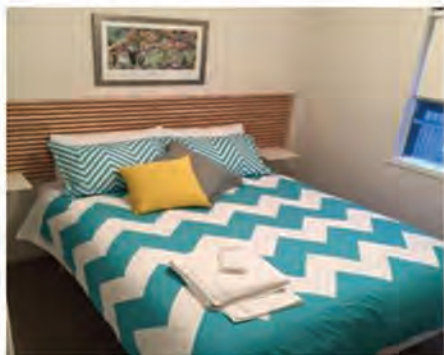


Looking for holiday accommodation  
@ the heart of Goolwa?



Welcome to

# Sid's Place



Phone **0402 375 718**  
for rates and availability

Located at 1a Sidmouth Street in the historic  
'Little Scotland' area of Goolwa.

Within a short stroll to all Goolwa has to offer:  
wharf precinct, cockle train, river, markets, restaurants, cafes & shops.  
A quaint 3 bedroom cottage, with a queen size bed, double bed and  
bunks. All linen and towels are provided for your convenience.

**Sid's Place** is pet friendly.

[www.facebook.com/1asidmouth](http://www.facebook.com/1asidmouth)





## MURRAY PRINCESS

Murray Princess was the third cruise boat designed and built by Keith Veenstra for his Murray River Cruises. Inspired by the Mississippi riverboats, construction of his vessel commenced in February 1985 in an open basin excavated on the northern side of Hindmarsh Island, near Goolwa.

Built entirely of steel, Murray Princess was completed in August 1986, at a cost of \$4.5 million. She is 1,700 gross tons, 220ft/67 m long and 49ft/15m wide. A pair of 200hp Scania diesels provide power through hydraulic units to turn the sternwheel. A pair of bow thrusters assist the vessel to manoeuvre, especially when rounding sharp bends. Accommodation is provided for 120 passengers in 60 cabins, spread over three decks. Six cabins are designed for use by disabled persons, and a lift connects all the decks. Features include a large lounge/dining room, complete with dance floors and bar overlooking the bow. At the stern is a most impressive lounge, with huge windows providing a superb view of the turning wheel.



## GOOLWA

This steel-hulled houseboat was built at Goolwa in the early 1980's by Keith Veenstra. It is said the design was intended to replicate the Captain Sturt, a sternwheeler imported from America in 1915, which pushed barges along the river rather than towing them. The remains of this vessel are still visible at Goolwa.

Goolwa has primarily been used in a static capacity, but on occasions has made a trip up the Murray River.

# SOUTH LAKES GOLF CLUB

## Billabong Road

Phone: (08) 8555 2299

Professional: (08) 8555 3271

Fax: (08) 8555 2512

Email [info@southlakesgolf.com.au](mailto:info@southlakesgolf.com.au)

[www.southlakesgolf.com.au](http://www.southlakesgolf.com.au)



*Where visitors are always welcome*



### Pro Shop - Golf Course

Profesional coaching available  
on our 18 hole (grass) golf  
course.

Green Fees Players welcome

### Competitions are Played

Wednesday

Thursday (Pro Shop Comp)

Friday (9 Hole)

Saturday

bookings to be made via the office

### Lloydy's Birdie Bistro Restaurant

A'la Carte Dinner - Wednesday, Friday & Saturday

A'la Carte Lunch - Sunday

Light Meal Lunch - Wednesday & Saturday

### Clubhouse Bar

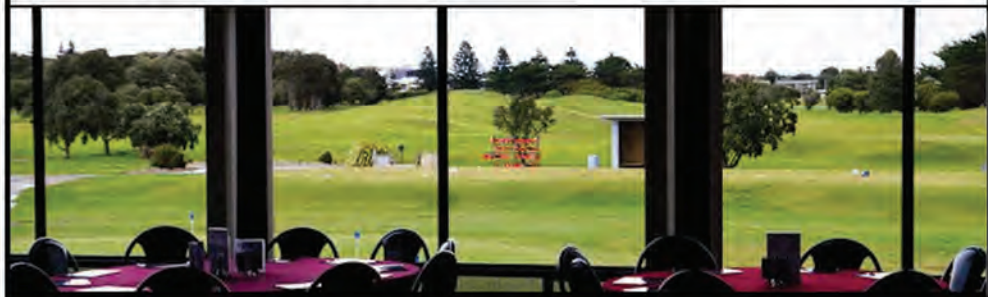
Relaxing, friendly  
atmosphere

### Sunset Room

Available for private functions, meetings,  
parties and wedding receptions

### Lucky Lakes Gaming Lounge

25 Machines





# the landing

WATERFRONT BISTRO & BAR

While you're visiting Hindmarsh Island, be sure to call into  
**The Landing Waterfront Bistro & Bar.**

Sit back and relax on our waterfront deck,  
taking in a drink or two.

- \* Open for lunch and dinner 7 days
- \* Functions and weddings welcome
- \* Kid friendly—adjacent to south coasts best playground
- \* Full a la carte menu plus daily specials
- \* Happy Hour every Wednesday and Friday, 4:30pm—6:30pm
- \* Just over the bridge from Goolwa



Call **8555 1122** to make your booking  
[tmhi.com.au](http://tmhi.com.au)



## THE COCKLE TRAIN

Step back in time and ride one of South Australia's most well known train trips. Of all SteamRanger's services, the Cackle Train is the icon, travelling over the first public railway line in Australia. The 30 minute journey travels along some of the most picturesque coastline of the Fleurieu Peninsula.



This service operates on Wednesdays, Sundays, public holidays and every day during South Australian school holidays.

All trains rely on a team of volunteers to keep this historic service operating. It's a big job but lots of fun.

All volunteers, from guards and ticket sales staff to drivers, firemen and station masters are trained to effectively operate SteamRanger.





# RELAXATION AND RECREATION



With an abundance of parks, gardens and playgrounds as well as the beach and river, you're sure to find the perfect spot to 'do your thing'.



Young or old...  
for fun or fitness...

on your own...  
or with a group...



## LOCAL EVENTS

### APRIL

8-9	Aquafest	Goolwa Aquatic Club	Barrage Rd
14-17	Easter		
22-23	Wooden Boat Festival	Goolwa Wharf	
25	Anzac Day Dawn Service	Goolwa RSL	Cutting Rd

### MAY

1-31	History Month	various	
9-12	Cittaslow International Assembly		
13	Sailability	Goolwa Regatta Yacht Club	Barrage Rd
14	Mothers Day		

### JUNE

tbc	Antiques & Collectables Fair	Signal Point	Goolwa Wharf
4-5	Frost Bite Regatta	Goolwa Aquatic Club	Barrage Rd
10-11	Queens Birthday Cup	South Lakes Golf Club	Billabong Rd
10-11	Frost Bite Regatta	Goolwa Regatta Yacht Club	Barrage Rd
24	Sailability	Goolwa Regatta Yacht Club	Barrage Rd

### JULY

tbc	Naidoc Week Celebrations	Signal Point	Goolwa Wharf Precinct
25-27	Golf SA Country Week	South Lakes Golf Club	Billabong Rd

### AUGUST

20	Club Mixed Foursomes Championships	South Lakes Golf Club	Billabong Rd
12	Sailability	Goolwa Regatta Yacht Club	Barrage Rd

### SEPTEMBER

3	Fathers Day	Goolwa Regatta Yacht Club	
9	Sailability	Goolwa Regatta Yacht Club	Barrage Rd

### Markets

Wharf (Rotary) -- April 2,16 May 7,21 June 4,18 July 2,16  
 Aug 6,20 Sep 3,17  
 Farmers (Cittaslow) -- April 9,23 May 14,28 June 11,25  
 July 9,23 Aug 13,27 Sep 10,24

### Live Music

Wharf Barrel Shed -- every Friday evening, every Sunday afternoon

*for more detail on anything in this booklet contact*  
 Visitor Information Centre 1300 466 592  
 corner Cutting Road and Cadell Street  
 email: [goolwavic@alexandrina.sa.gov.au](mailto:goolwavic@alexandrina.sa.gov.au)

**about Print**

[www.aboutprintgoolwa.com.au](http://www.aboutprintgoolwa.com.au)